

URETEROSCOPY AND LASER STONE

What is “Ureteroscopy”?

- Examination of the upper urinary tract with a small calibre telescope
- The telescope is passed through the urethra and bladder, into the ureter to locate the stone
- An optical fibre is passed through the telescope to transmit LASER energy to the stone which fragments it into dust
- A small “basket” may be used to retrieve stone fragments for chemical analysis

Why do I need this?

- You have a stone in your ureter, less than 2 cm in size, which may be causing pain, obstruction, bleeding or infection

How long does it take?

- 30 - 60 minutes under a general anaesthetic, depending on the stone size, location and hardness

What are the risks?

- Infection in your urine or blood (sepsis) - antibiotics are given
- Need for a second procedure - if the ureter is too narrow to pass the telescope, vision is poor due to bleeding or the stone is very large and hard. A stent tube is inserted and the procedure is repeated 2 weeks later
- Ureteral injury - a stent tube is inserted to allow healing, or rarely an open operation is needed

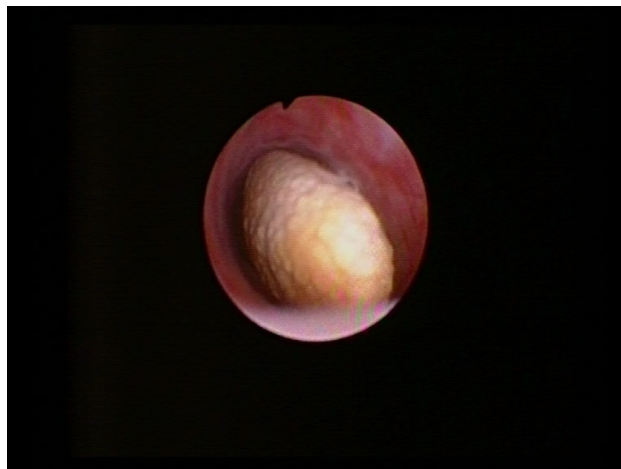
What can I expect after surgery?

- When you wake up you will usually have a catheter in your bladder and an internal stent tube
- The **stent** is a temporary tube which passes between your kidney and bladder and allows drainage while there is swelling present
- Stents may cause the following symptoms;
 - flank pain while urinating
 - urinary frequency
 - a feeling of incomplete bladder emptying
- The stent is removed 1 - 2 weeks later under local anaesthetic in our day surgery, and these symptoms resolve immediately
- The following day, the catheter is removed and you can go home once you have passed urine

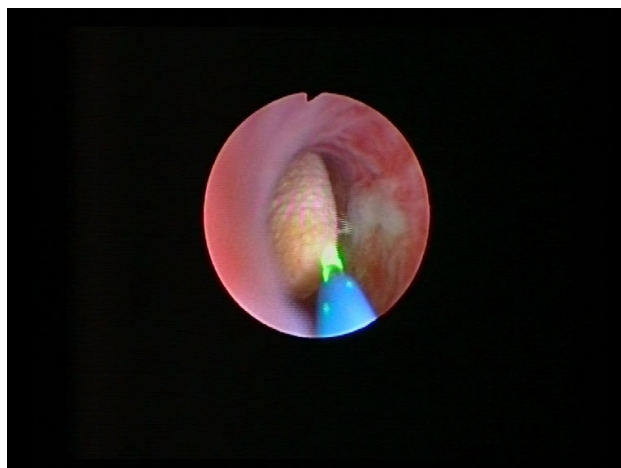
Peter Sutherland, John Bolt, Brian Landers, Richard Wells, Darren Foreman

326 South Terrace, Adelaide, 5000.

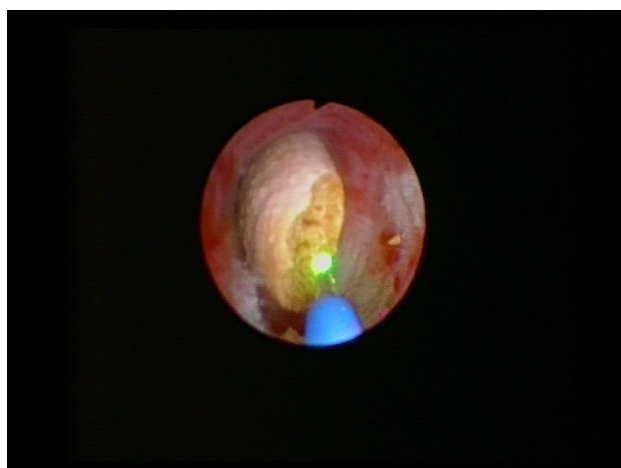
Telephone: 8223 1472 www.sturology.com.au



The stone is identified with the telescope

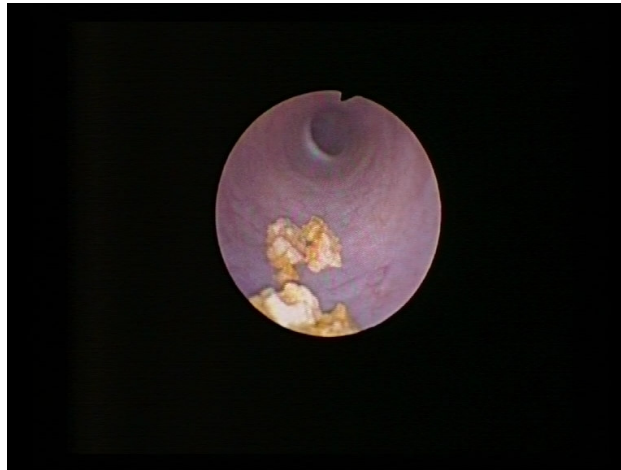


an optical fibre (blue with green light at tip) is inserted through the telescope

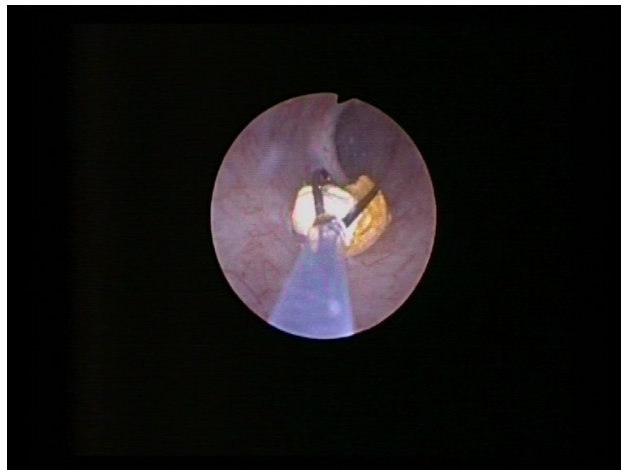


LASER energy is used to fragment the stone

Peter Sutherland, John Bolt, Brian Landers, Richard Wells, Darren Foreman
326 South Terrace, Adelaide, 5000.
Telephone: 8223 1472 www.sturology.com.au



small stone fragments are in the ureter



all stone fragments are removed using a basket through the telescope

Peter Sutherland, John Bolt, Brian Landers, Richard Wells, Darren Foreman
326 South Terrace, Adelaide, 5000.
Telephone: 8223 1472 www.sturology.com.au